

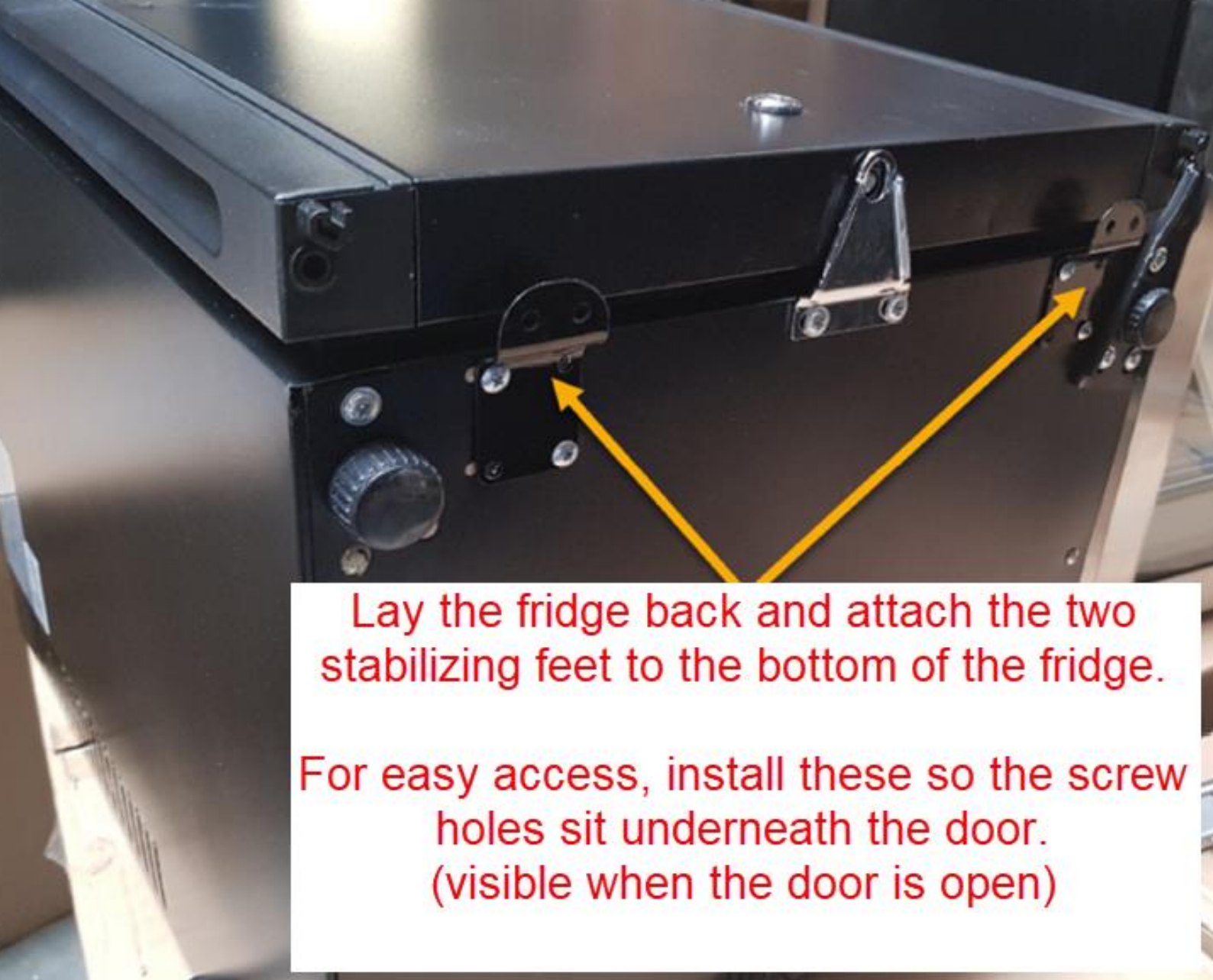
SHK-Mini Installation Manual (Mini Sliding Hinge Kit)



Please ensure you have the correct ventilation for your fridge prior to installation.

Contact us if you are unsure.

Please call us on the number below if you have any questions or concerns.
1300 376 849



Lay the fridge back and attach the two stabilizing feet to the bottom of the fridge.

For easy access, install these so the screw holes sit underneath the door. (visible when the door is open)

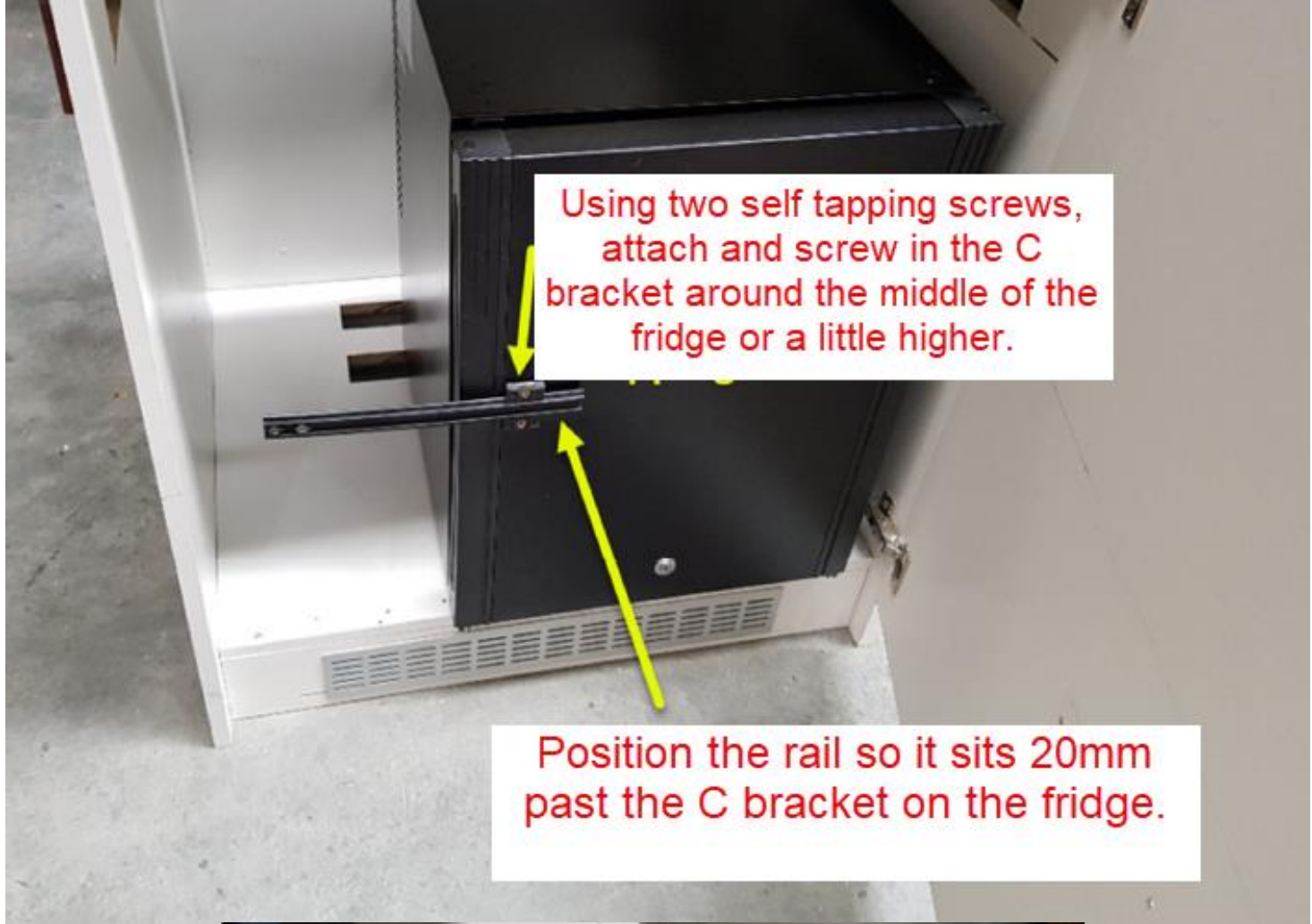


If the cabinet is larger than the fridge, put fridge close to the edge of the cabinet.



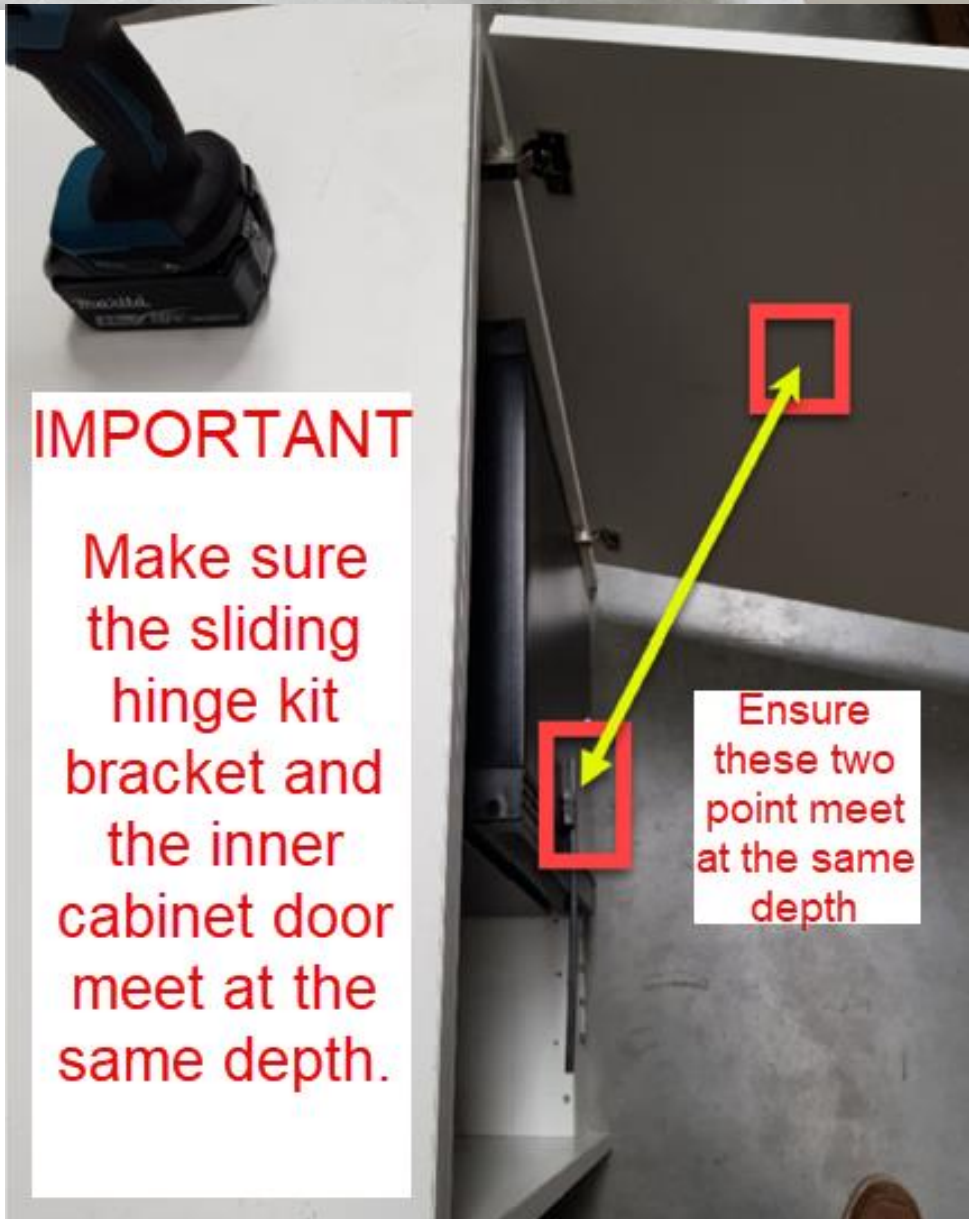
Right-hinged models need to be placed on the right side of the cabinet.

Left-hinged models will need to be placed on the left side



Using two self tapping screws, attach and screw in the C bracket around the middle of the fridge or a little higher.

Position the rail so it sits 20mm past the C bracket on the fridge.



IMPORTANT

Make sure the sliding hinge kit bracket and the inner cabinet door meet at the same depth.

Ensure these two point meet at the same depth



Open both the fridge and cabinet doors to their open positions.
Screw the rail onto the cabinet door.

Please Note,
you need to ensure the 20mm of rail that was past the C bracket on the fridge remains.



Fully open the doors and adjust the fridge so it sits square with the cabinet door while closing.

Once positioned, screw in the stabilizing feet to secure the unit in place.