

SHK-Large Installation Manual (Large Sliding Hinge Kit)



Please ensure you have the correct ventilation for your fridge prior to installation.

Contact us if you are unsure.

Please call us on the number below if you have any questions or concerns.

1300 376 849



SUPPORT RAIL - DON'T INSTALL STABILIZING FEET IN HERE

To install the stabilizing feet you need to lay the fridge back to access to bottom.

There may be a support rail which holds the front two feet.

Remove one of the screws pointed out by the arrows and place the stabilizing foot in place.



Use self tapping screws to install the stabilizing foot.

Replace the existing screw with a self tapping screw.

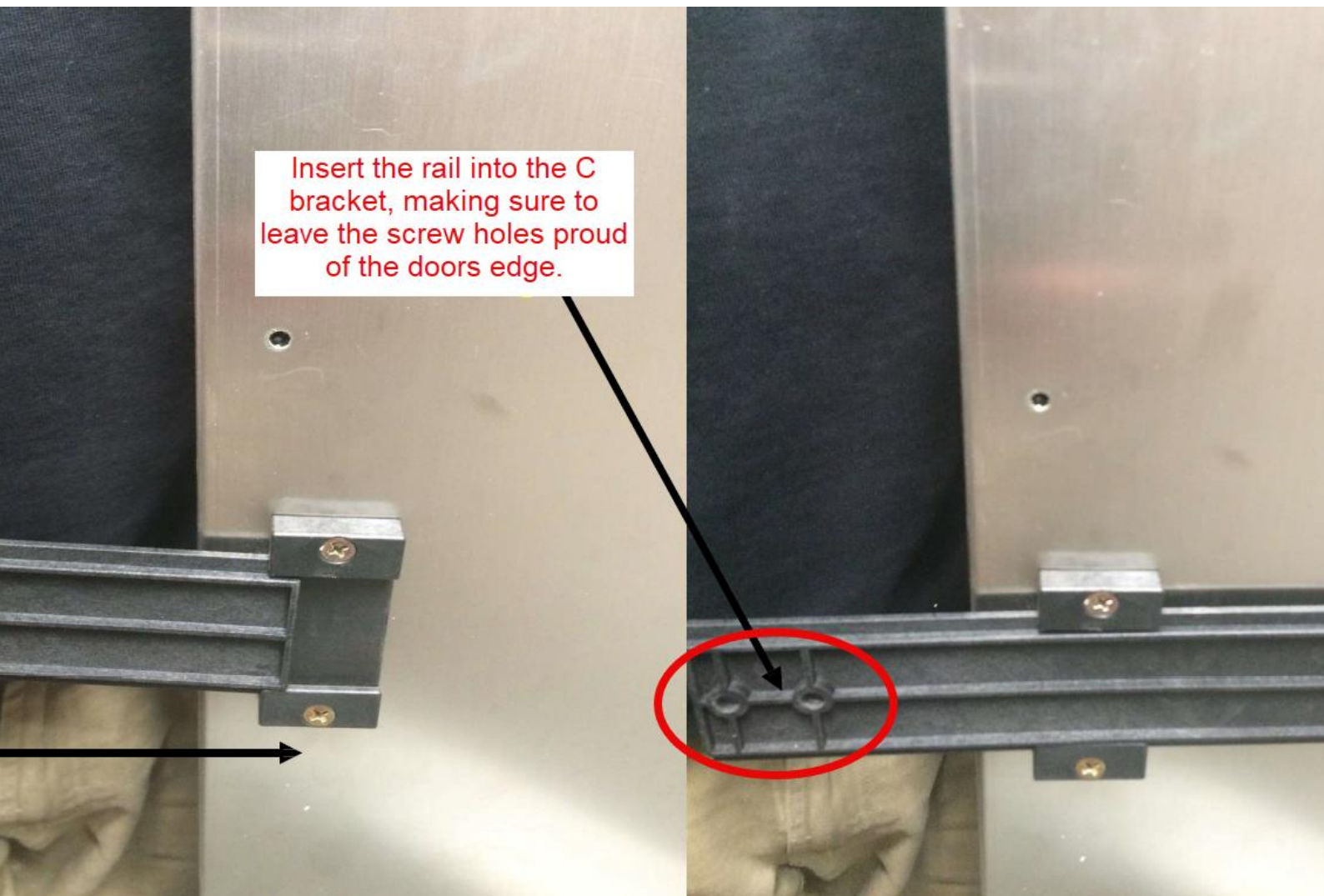
Ensure the 'lip' of the foot sticks out from the side of the fridge.



Come in 15mm from the edge of the fridges door,
and screw a C bracket at your chosen height,
usually just above the centre.

Do this on the opposite side to the fridges hinge.

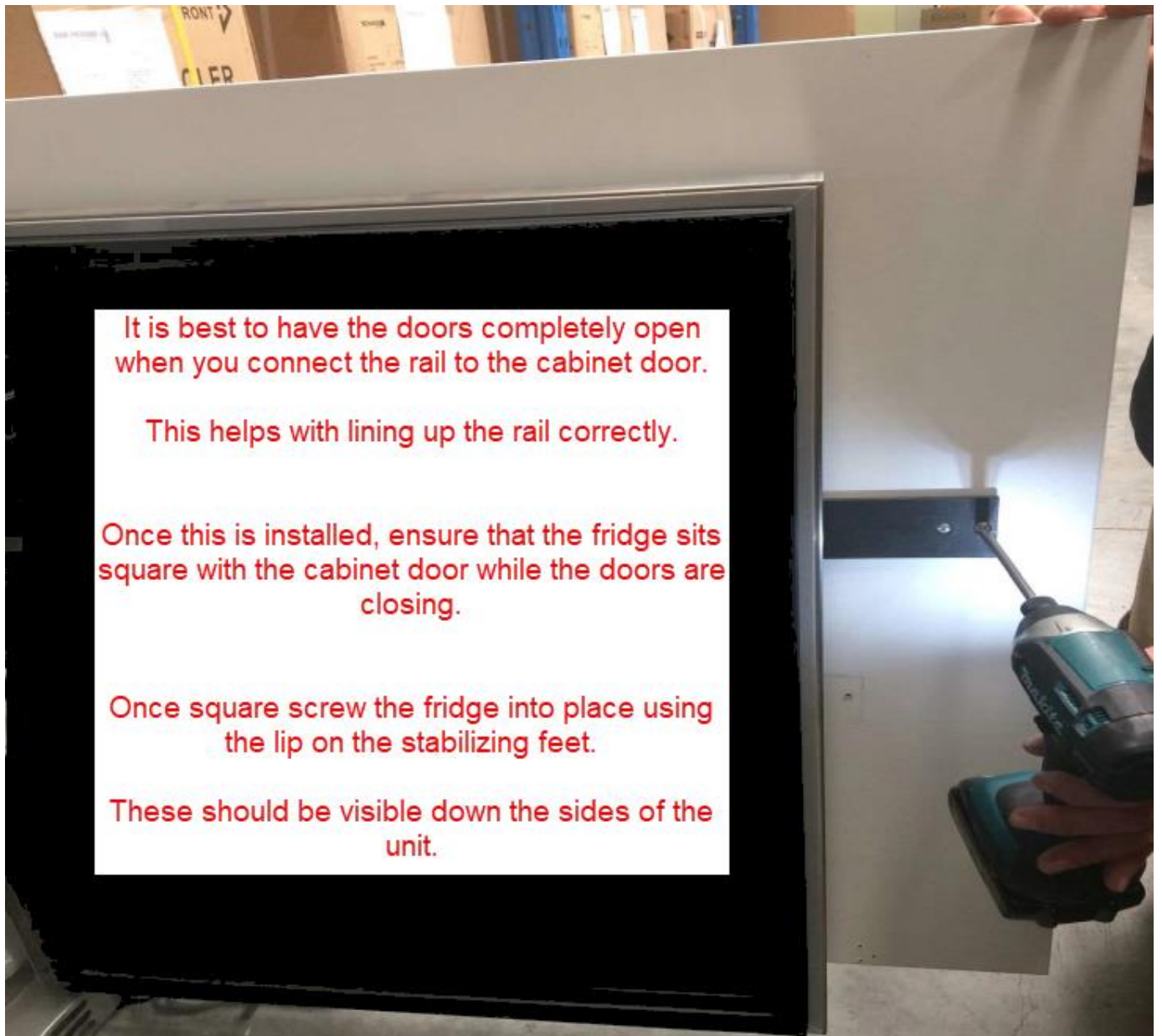
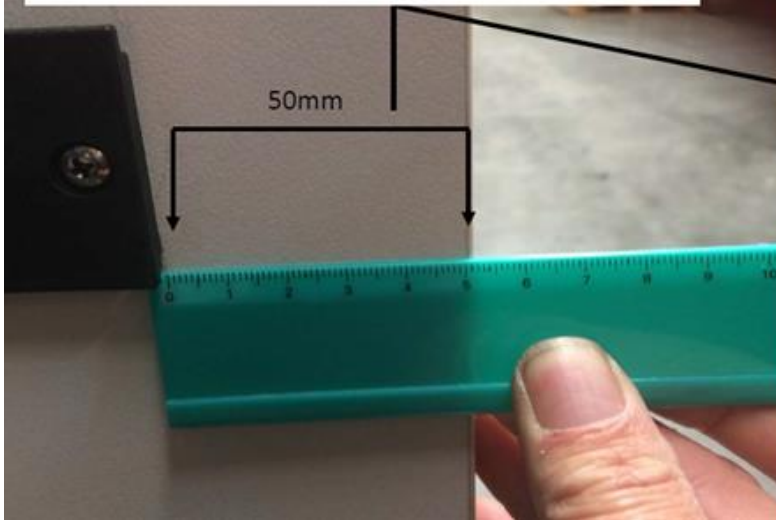
Insert the rail into the C
bracket, making sure to
leave the screw holes proud
of the doors edge.



Close the cabinet door to meet the rail.
Measure approximately 50mm from the edge of the cabinet door and screw the rail to the cabinet door.

****Please Note****

This distance may change depending on fridge & cabinet door size differences.



It is best to have the doors completely open when you connect the rail to the cabinet door.

This helps with lining up the rail correctly.

Once this is installed, ensure that the fridge sits square with the cabinet door while the doors are closing.

Once square screw the fridge into place using the lip on the stabilizing feet.

These should be visible down the sides of the unit.